

Thinking about switching to an oral preventative treatment for your hereditary angioedema (HAE)?

It's important to have frequent discussions with your healthcare provider about how you might continue to feel limited due to HAE symptoms or the treatment you're taking. Together, you can identify your personal needs to see if ORLADEYO® may fit your lifestyle goals. Answer the questions below and schedule an appointment to discuss with your healthcare provider.

Treating your HAE

How are you currently treating your HAE? Check all that apply.

Rescue therapy	Preventative therapy
BERINERT® (C1 esterase inhibitor [human])	TAKHZYRO® (lanadelumab-flyo)
FIRAZYR® (icatibant injection)	CINRYZE® (C1 esterase inhibitor [human])
KALBITOR® (ecallantide)	HAEGARDA® (C1 esterase inhibitor subcutaneous [human])
RUCONEST® (C1 esterase inhibitor [recombinant])	Androgens (danazol, stanozolol)
Not treating at all	Other

Living with HAE

- How many attacks have you experienced: _____ In the last month _____ In the last 3 to 6 months
- On a scale of **mild** to **very severe**, rate the average severity of your attacks

Mild	Moderate	Severe	Very severe
------	----------	--------	-------------
- Have there been attacks you have not treated in the past? If so, why?

Treatment with needles	Cost of treatment	Medication not available	Other	Not applicable
------------------------	-------------------	--------------------------	-------	----------------
- Do you ever change your daily activities due to attacks or fear of attacks? Yes No

What do you want out of preventative therapy?

Think about your experience with your current preventative therapy and your goals for your daily activities. Check all that apply to your current preventative therapy below:

- | | |
|--|---|
| It is time consuming to prepare and administer | I'm interested in a treatment that only requires the use of needles for breakthrough attacks |
| It is stressful to administer | I'm interested in a treatment that has a team of people who would help me with the insurance approval process |
| The side effects are bothersome | |

WHAT IS ORLADEYO® (berotralstat)?

ORLADEYO (or-luh-DAY-oh) is a prescription medicine used to prevent attacks of hereditary angioedema (HAE) in adults and children 12 years of age and older. It is not known if ORLADEYO is safe and effective in children under 12 years of age.

It is not known if ORLADEYO is safe and effective to treat an acute HAE attack, therefore ORLADEYO should not be used to treat an acute HAE attack.

Do not take more than one capsule of ORLADEYO per day because extra doses can cause heart rhythm problems.

Please see Important Safety Information on page 2, and accompanying full Prescribing Information including the Patient Information.

From the list below, rank the most important factors for you when thinking about starting a different treatment with **1 being the most important** and **5 being the least important**.

- | | |
|---|---|
| <input type="checkbox"/> How well it fits into your lifestyle | <input type="checkbox"/> How it's given (injection, infusion, orally) |
| <input type="checkbox"/> How well it prevents attacks | <input type="checkbox"/> How safe it is |
| <input type="checkbox"/> How normal it makes me feel | |

List any other important factors or goals here: _____

Important Safety Information

WHAT IS ORLADEYO® (berotralstat)?

ORLADEYO (or-luh-DAY-oh) is a prescription medicine used to prevent attacks of hereditary angioedema (HAE) in adults and children 12 years of age and older. It is not known if ORLADEYO is safe and effective in children under 12 years of age.

It is not known if ORLADEYO is safe and effective to treat an acute HAE attack, therefore ORLADEYO should not be used to treat an acute HAE attack.

Do not take more than one capsule of ORLADEYO per day because extra doses can cause heart rhythm problems.

IMPORTANT SAFETY INFORMATION

Before taking ORLADEYO, tell your healthcare provider about all of your medical conditions, including if you

- have liver problems or are on kidney dialysis.
- are pregnant or planning to become pregnant. It is not known if ORLADEYO can harm your unborn baby.
- are breastfeeding or plan to breastfeed. It is not known if ORLADEYO passes into your breastmilk. Talk to your healthcare provider about the best way to feed your baby while taking ORLADEYO.

Tell your healthcare provider about all of the medicines you take, including other medicines for HAE, prescription and over-the-counter medicines, vitamins, and herbal supplements.

Taking ORLADEYO with certain other medicines may affect the way other medicines work and other medicines may affect how ORLADEYO works.

Know the medicines you take and keep a list of them to show your healthcare provider and pharmacist when you get a new medicine.

What are the possible side effects of ORLADEYO?

Taking more than one capsule of ORLADEYO per day may cause serious side effects, including **heart rhythm problems**. A heart rhythm problem called QT prolongation can happen in people who take more than one capsule of ORLADEYO per day. This condition can cause an abnormal heartbeat. Do not take more than one capsule of ORLADEYO per day.

The most common side effects of ORLADEYO include abdominal pain, vomiting, diarrhea, back pain, and heartburn. These are not all of the possible side effects of ORLADEYO. For more information, ask your healthcare provider or pharmacist.

Talk to your healthcare provider for medical advice about side effects.

You are encouraged to report side effects of prescription drugs to BioCryst Pharmaceuticals, Inc at 1-833-633-2279 or to the FDA at www.fda.gov/medwatch or 1-800-FDA-1088.

For more information, please see the full Prescribing Information including the Patient Information.

HIGHLIGHTS OF PRESCRIBING INFORMATION

These highlights do not include all the information needed to use ORLADEYO® safely and effectively. See full prescribing information for ORLADEYO.

ORLADEYO (berotralstat) capsules, for oral use
Initial U.S. Approval: 2020

RECENT MAJOR CHANGES

Dosage and Administration, Recommended Removed 11/2023
Dosage for Concomitant Use with P-gp or
BCRP Inhibitors (2.3)

INDICATIONS AND USAGE

ORLADEYO is a plasma kallikrein inhibitor indicated for prophylaxis to prevent attacks of hereditary angioedema (HAE) in adults and pediatric patients 12 years and older. (1)

Limitations of Use:

ORLADEYO should not be used for treatment of acute HAE attacks. (1)

DOSAGE AND ADMINISTRATION

- Recommended Dosage: One capsule (150 mg) taken orally once daily with food. (2.1)
- See Full Prescribing Information for:
- Dosage adjustment in patients with moderate or severe hepatic impairment. (2.2)
 - Dosage adjustment in patients with persistent gastrointestinal reactions. (2.3)

DOSAGE FORMS AND STRENGTH

Capsules: 150 mg, 110 mg (3)

CONTRAINDICATIONS

None (4)

WARNINGS AND PRECAUTIONS

An increase in QT prolongation can occur at dosages higher than the recommended 150 mg once daily dosage. Additional doses or doses of ORLADEYO higher than 150 mg once daily are not recommended. (5.1)

ADVERSE REACTIONS

Most common adverse reactions (≥10%) are abdominal pain, vomiting, diarrhea, back pain, and gastroesophageal reflux disease. (6.1)

To report SUSPECTED ADVERSE REACTIONS, contact BioCryst Pharmaceuticals, Inc. at 1-833-633-2279 or FDA at 1-800-FDA-1088 or www.fda.gov/medwatch.

DRUG INTERACTIONS

P-gp inducers: Avoid use with ORLADEYO. (7.1)

CYP2D6, CYP3A4 or P-gp Substrates: Appropriately monitor or dose titrate narrow therapeutic index drugs that are predominantly metabolized by CYP2D6, CYP3A4 or are P-gp substrates when co-administered with ORLADEYO. (7.2, 12.3)

See 17 for PATIENT COUNSELING INFORMATION and FDA-approved patient labeling.

Revised: 11/2023

FULL PRESCRIBING INFORMATION: CONTENTS*

1 INDICATIONS AND USAGE

2 DOSAGE AND ADMINISTRATION

- 2.1 Recommended Dosage
- 2.2 Recommended Dosage in Patients with Hepatic Impairment
- 2.3 Dosage Adjustment in Patients with Persistent GI Reactions

3 DOSAGE FORMS AND STRENGTHS

4 CONTRAINDICATIONS

5 WARNINGS AND PRECAUTIONS

- 5.1 Risk of QT Prolongation with Higher-Than-Recommended Dosages

6 ADVERSE REACTIONS

- 6.1 Clinical Trials Experience

7 DRUG INTERACTIONS

- 7.1 Potential for Other Drugs to Affect ORLADEYO
- 7.2 Potential for ORLADEYO to Affect Other Drugs

8 USE IN SPECIFIC POPULATIONS

- 8.1 Pregnancy
- 8.2 Lactation
- 8.4 Pediatric Use
- 8.5 Geriatric Use
- 8.6 Renal Impairment
- 8.7 Hepatic Impairment

11 DESCRIPTION

12 CLINICAL PHARMACOLOGY

- 12.1 Mechanism of Action
- 12.2 Pharmacodynamics
- 12.3 Pharmacokinetics

13 NONCLINICAL TOXICOLOGY

- 13.1 Carcinogenesis, Mutagenesis, Impairment of Fertility

14 CLINICAL STUDIES

16 HOW SUPPLIED/STORAGE AND HANDLING

17 PATIENT COUNSELING INFORMATION

* Sections or subsections omitted from the full prescribing information are not listed

FULL PRESCRIBING INFORMATION

1 INDICATIONS AND USAGE

ORLADEYO® is indicated for prophylaxis to prevent attacks of hereditary angioedema (HAE) in adults and pediatric patients 12 years of age and older.

Limitations of Use:

The safety and effectiveness of ORLADEYO for the treatment of acute HAE attacks have not been established. ORLADEYO should not be used for treatment of acute HAE attacks. Additional doses or doses of ORLADEYO higher than 150 mg once daily are not recommended due to the potential for QT prolongation [see *Warnings and Precautions (5.1)*].

2 DOSAGE AND ADMINISTRATION

2.1 Recommended Dosage

The recommended dosage of ORLADEYO is one 150 mg capsule taken orally once daily with food.

2.2 Recommended Dosage in Patients with Hepatic Impairment

No dosage adjustment of ORLADEYO is recommended for patients with mild hepatic impairment (Child-Pugh Class A) [see *Use in Specific Populations (8.7)* and *Clinical Pharmacology (12.3)*].

In patients with moderate or severe hepatic impairment (Child-Pugh B or C), the recommended dosage of ORLADEYO is one 110 mg capsule taken orally once daily with food [see *Use in Specific Populations (8.7)* and *Clinical Pharmacology (12.3)*].

2.3 Dosage Adjustment in Patients with Persistent GI Reactions

Gastrointestinal (GI) reactions may occur in patients receiving ORLADEYO [see *Adverse Reactions (6.1)*]. If GI events persist, a reduced dose of 110 mg once daily with food may be considered.

3 DOSAGE FORMS AND STRENGTHS

Capsules:

- 150 mg: a white opaque body with a black imprint “150” and a light blue opaque cap with a black imprint “BCX”.
- 110 mg: light blue opaque capsules with a white imprint “110” on body and a white imprint “BCX” on cap.

4 CONTRAINDICATIONS

None

5 WARNINGS AND PRECAUTIONS

5.1 Risk of QT Prolongation with Higher-Than-Recommended Dosages

ORLADEYO should not be used for treatment of acute attacks of HAE. Additional doses or doses of ORLADEYO higher than 150 mg once daily are not recommended. An increase in QT was observed at dosages higher than the recommended 150 mg once daily dosage and was concentration dependent [see *Clinical Pharmacology (12.2)*].

6 ADVERSE REACTIONS

The following clinically significant adverse reaction is described elsewhere in the labeling:

- QT Prolongation [see *Warnings and Precautions (5.1)*]

6.1 Clinical Trials Experience

Because clinical trials are conducted under widely varying conditions, adverse reaction rates observed in the clinical trials of a drug cannot be directly compared to rates in the clinical trials of another drug and may not reflect the rates observed in practice.

The safety of ORLADEYO is primarily based on 24-week (Part 1) data from a 3-part, double-blind, parallel-group, placebo-controlled study (Trial 1) in 120 patients with Type I or II HAE randomized and dosed with either ORLADEYO 110 mg, 150 mg, or placebo, once daily with food. After Week 24, patients who continued in the study received active treatment through 48 weeks.

In Trial 1, a total of 81 patients aged 12 years and older with HAE received at least one dose of ORLADEYO in Part 1. Overall, 66% of patients were female and 93% of patients were Caucasian with a mean age of 41.6 years. The proportion of patients who discontinued study drug prematurely due to adverse reactions was 7% and 3% for patients treated with 110 mg and 150 mg ORLADEYO, respectively, and 3% for placebo-treated patients. No deaths occurred in the trial.

The safety profile of ORLADEYO was generally similar across all subgroups of patients, including analysis by age, sex, and geographic region.

Table 1 shows adverse reactions occurring in $\geq 10\%$ of patients in any ORLADEYO treatment group that also occurred at a higher rate than in the placebo treatment group in Trial 1.

Table 1: Adverse Reactions Observed in $\geq 10\%$ of Patients in any ORLADEYO Treatment Group (Trial 1)

Adverse Reaction	Placebo (N=39)	ORLADEYO		
		110 mg (N=41)	150 mg (N=40)	Total (N=81)
	n (%)	n (%)	n (%)	n (%)
Abdominal Pain*	4 (10)	4 (10)	9 (23)	13 (16)
Vomiting	1 (3)	4 (10)	6 (15)	10 (12)
Diarrhea†	0	4 (10)	6 (15)	10 (12)
Back Pain	1 (3)	1 (2)	4 (10)	5 (6)
Gastroesophageal Reflux Disease	0	4 (10)	2 (5)	6 (7)

* includes Abdominal pain, Abdominal discomfort, Abdominal pain upper, and Abdominal tenderness

† includes Diarrhea and Frequent bowel movements

Gastrointestinal reactions, including abdominal pain, vomiting, and diarrhea occurred more frequently in patients receiving ORLADEYO 150 mg versus ORLADEYO 110 mg or placebo. These reactions generally occurred early after initiation of treatment with ORLADEYO, became less frequent with time, and typically self-resolved. No patients in the ORLADEYO 150 mg dose group and 1 patient in the ORLADEYO 110 mg dose group discontinued treatment due to a gastrointestinal adverse reaction.

Less Common Adverse Reactions

Other adverse reactions that occurred in Part 1 of Trial 1 with an incidence between 5% and $<10\%$ at a higher incidence in ORLADEYO-treated patients compared to placebo included headache (9% versus 5%), fatigue (6% versus 3%), and flatulence (6% versus 3%).

A maculopapular drug rash was reported in less than 1% of patients treated with ORLADEYO. The rash resolved, including in subjects who continued dosing.

Safety data are also available from 227 patients enrolled in an ongoing, open-label, long-term safety study (Trial 2) who received ORLADEYO 110 mg (N=100) or 150 mg (N=127) once daily with food and are consistent with the 24-week controlled safety data from Trial 1 (Part 1).

Laboratory Abnormalities

Transaminase elevations

In Part 1 of Trial 1, a single 150 mg ORLADEYO-treated patient discontinued treatment due to asymptomatic elevated transaminases (ALT >8x the upper limit of normal [ULN] and AST >3x ULN). Total bilirubin was normal. No subject receiving 110 mg or placebo developed transaminase levels >3x ULN. In addition to this patient, 2 ORLADEYO-treated patients developed laboratory-related hepatic adverse events compared to 1 placebo-treated patient. No patient reported serious adverse reactions of elevated transaminases.

7 DRUG INTERACTIONS

This section describes clinically relevant drug interactions with ORLADEYO. Drug interaction studies are described elsewhere in the labeling [see *Clinical Pharmacology (12.3)*].

7.1 Potential for Other Drugs to Affect ORLADEYO

P-gp Inducers

Berotrastat is a substrate of P-gp and BCRP. P-gp inducers (e.g., rifampin, St. John's wort) may decrease berotrastat plasma concentration, leading to reduced efficacy of ORLADEYO. The use of P-gp inducers is not recommended with ORLADEYO.

7.2 Potential for ORLADEYO to Affect Other Drugs

CYP2D6 and CYP3A4 Substrates

ORLADEYO at a dose of 150 mg is a moderate inhibitor of CYP2D6 and CYP3A4. For concomitant medications with a narrow therapeutic index that are predominantly metabolized by CYP2D6 (e.g., thioridazine, pimozide) or CYP3A4 (e.g., cyclosporine, fentanyl), appropriate monitoring and dose titration is recommended [see *Clinical Pharmacology (12.3)*].

Desogestrel

In a drug interaction study conducted in healthy women of childbearing potential (N=22), co-administration of ORLADEYO at a dose of 150 mg at steady state with a single dose of 0.15 mg/0.03 mg desogestrel/ethinyl estradiol resulted in increased exposure to etonogestrel, the active metabolite of desogestrel. If ORLADEYO is co-administered with desogestrel, any potential risk of concurrent use of desogestrel should be weighed against benefit [see *Clinical Pharmacology (12.3)*].

P-gp Substrates

ORLADEYO at a dose of 300 mg is a P-gp inhibitor. Appropriate monitoring and dose titration is recommended for P-gp substrates (e.g., digoxin) when co-administering with ORLADEYO [see *Clinical Pharmacology (12.3)*].

8 USE IN SPECIFIC POPULATIONS

8.1 Pregnancy

Risk Summary

There are insufficient data in pregnant women available to inform drug-related risks with ORLADEYO use in pregnancy. Based on animal reproduction studies, no evidence of structural alterations was observed when berotrastat was administered orally to pregnant rats and rabbits during

organogenesis at doses up to approximately 10 and 2 times, respectively, the maximum recommended human daily dose (MRHDD) in adults on an AUC basis (see *Data*).

The background risk of major birth defects and miscarriage for the indicated population is unknown. In the U.S. general population, the estimated background risk of major birth defects and miscarriage in clinically recognized pregnancies is 2-4% and 15-20%, respectively.

Data

Animal Data

In animal reproduction studies, oral administration of berotralstat to pregnant rats and rabbits during the period of organogenesis did not cause fetal structural alterations. The berotralstat dose in rats and rabbits was up to approximately 10 and 2 times, respectively, the MRHDD in adults (on an AUC basis at maternal doses of 75 and 100 mg/kg/day, respectively). In a pre- and postnatal development study in rats, oral administration of berotralstat to pregnant rats during the period of organogenesis and until delivery at doses up to 45 mg/kg/day (approximately 2 times of the MRHDD on a mg/m² basis) did not cause fetal structural alterations either. Berotralstat concentrations in the fetal blood were approximately 5-11% of the maternal blood.

8.2 Lactation

Risk Summary

There are no data on the presence of berotralstat in human milk, its effects on the breastfed infant, or its effects on milk production. However, when a drug is present in animal milk, it is likely that the drug will be present in human milk. Low levels of berotralstat were detected in the plasma of rat pups when dams were dosed with the drug orally during the lactation period. The berotralstat concentration in the pup plasma was approximately 2% of the maternal plasma (see *Data*).

The developmental and health benefits of breastfeeding should be considered along with the mother's clinical need for ORLADEYO and any potential adverse effects on the breastfed infant from ORLADEYO or from the underlying maternal condition.

Data

Animal Data

In the pre- and post-natal development study in rats, berotralstat was administered to dams during the pregnancy and lactation periods at doses up to 45 mg/kg/day (approximately 2 times of the MRHDD on a mg/m² basis). Berotralstat was detected in the plasma of pups during the lactation period. The berotralstat concentration in the pup plasma was approximately 2% of the maternal plasma. Both dams and pups at 45 mg/kg/day showed statistically significant decreases in body weight gain (p<0.05). No treatment-related effects were observed at 25 mg/kg/day (approximately equal to the MRHDD on a mg/m² basis).

8.4 Pediatric Use

The safety and effectiveness of ORLADEYO for prophylaxis to prevent attacks of hereditary angioedema have been established in pediatric patients aged 12 and older. Use of ORLADEYO in this population is supported by evidence from an adequate and well-controlled study (Trial 1) that included adults and a total of 6 adolescent patients aged 12 to <18 years of age. The safety profile and attack rate on study were similar to those observed in adults [see *Adverse Reactions (6.1)*, *Clinical Pharmacology (12.3)*, and *Clinical Studies (14)*]. An additional 10 adolescent patients aged 12 to <18 years were enrolled in the open-label study (Trial 2).

The safety and effectiveness of ORLADEYO in pediatric patients <12 years of age have not been established.

8.5 Geriatric Use

The safety and effectiveness of ORLADEYO were evaluated in a subgroup of patients (N=9) aged ≥ 65 years in Trial 1. Results of the subgroup analysis by age were consistent with overall study results. The safety profile from an additional 5 elderly patients aged ≥ 65 years enrolled in the open-label, long-term safety study (Trial 2) was consistent with data from Trial 1 [see *Adverse Reactions* (6.1), *Clinical Pharmacology* (12.3), and *Clinical Studies* (14)].

8.6 Renal Impairment

No dosage adjustment of ORLADEYO is recommended for patients with mild, moderate, or severe renal impairment [see *Clinical Pharmacology* (12.3)].

ORLADEYO has not been studied in patients with End-Stage Renal Disease ($CL_{CR} < 15$ mL/min or $eGFR < 15$ mL/min/ 1.73 m² or patients requiring hemodialysis), and therefore is not recommended for use in these patient populations [see *Clinical Pharmacology* (12.3)].

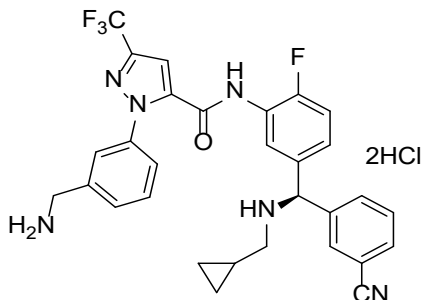
8.7 Hepatic Impairment

No dosage adjustment of ORLADEYO is recommended for patients with mild hepatic impairment (Child-Pugh Class A) [see *Clinical Pharmacology* (12.3)].

In patients with moderate or severe hepatic impairment (Child-Pugh B or C), the recommended dose of ORLADEYO is 110 mg once daily with food [see *Dosage and Administration* (2.2) and *Clinical Pharmacology* (12.3)].

11 DESCRIPTION

ORLADEYO (berotralstat) capsules is a plasma kallikrein inhibitor. Berotralstat is presented as the dihydrochloride salt with the chemical name 1-[3-(aminomethyl)phenyl]-N-(5-((R)-(3-cyanophenyl)[(cyclopropylmethyl)amino]methyl)-2-fluorophenyl)-3-(trifluoromethyl)-1H-pyrazole-5-carboxamide dihydrochloride. The chemical structure is:



Berotralstat dihydrochloride is a white to off-white powder that is soluble in water at $pH \leq 4$. The molecular formula is $C_{30}H_{26}F_4N_6O \cdot 2HCl$ and the molecular weight is 635.49 (dihydrochloride).

ORLADEYO is supplied as 150 mg (equivalent to 169.4 mg berotralstat dihydrochloride) and 110 mg (equivalent to 124.3 mg berotralstat dihydrochloride) hard gelatin capsules for oral administration. Each capsule contains the active ingredient berotralstat dihydrochloride and the inactive ingredients colloidal silicon dioxide, crospovidone, magnesium stearate, and pregelatinized starch.

12 CLINICAL PHARMACOLOGY

12.1 Mechanism of Action

Berotralstat is a plasma kallikrein inhibitor that binds to plasma kallikrein and inhibits its proteolytic activity. Plasma kallikrein is a protease that cleaves high-molecular-weight kininogen (HMWK) to generate cleaved HMWK (cHMWK) and bradykinin, a potent vasodilator that increases vascular permeability resulting in swelling and pain associated with HAE. In patients with HAE due to C1-

inhibitor (C1-INH) deficiency or dysfunction, normal regulation of plasma kallikrein activity is not present, which leads to uncontrolled increases in plasma kallikrein activity and results in angioedema attacks. Berotralstat decreases plasma kallikrein activity to control excess bradykinin generation in patients with HAE.

12.2 Pharmacodynamics

Concentration-dependent inhibition of plasma kallikrein, measured as a reduction from baseline of specific enzyme activity, was demonstrated after oral administration of ORLADEYO once daily in patients with HAE.

Cardiac Electrophysiology

At the recommended dose of 150 mg once daily, ORLADEYO does not prolong the QT interval to any clinically relevant extent. At 3 times the recommended dose, the mean (upper 90% confidence interval) increase in QTcF was 15.9 msec (23.5 msec). The observed increase in QTcF was concentration-dependent.

12.3 Pharmacokinetics

Following oral administration of berotralstat 150 mg once daily, the steady-state C_{max} and area under the curve over the dosing interval (AUC_{tau}) are 158 ng/mL (range: 110 to 234 ng/mL) and 2770 ng*hr/mL (range: 1880 to 3790 ng*hr/mL), respectively. Following oral administration of berotralstat 110 mg once daily, the steady-state C_{max} and AUC_{tau} are 97.8 ng/mL (range: 63 to 235 ng/mL) and 1600 ng*hr/mL (range: 950 to 4170 ng*hr/mL), respectively.

Berotralstat exposure (C_{max} and AUC) increases greater than proportionally with dose and steady state is reached by days 6 to 12. After once-daily administration, exposure of berotralstat at steady state is approximately 5 times that after a single dose.

The pharmacokinetics of berotralstat are similar between healthy adult subjects and in patients with HAE.

Absorption

The median time to maximum plasma concentration (T_{max}) of berotralstat when administered with food is 5 hours (range: 1 to 8 hours).

Effect of Food

No differences in the C_{max} and AUC of berotralstat were observed following administration with a high-fat meal, however the median T_{max} was delayed by 3 hours, from 2 hours (fasted) to 5 hours (fed).

Distribution

Plasma protein binding is approximately 99%. After a single dose of radiolabeled berotralstat 300 mg, the blood to plasma ratio was approximately 0.92.

Elimination

The median elimination half-life of berotralstat was approximately 93 hours (range: 39 to 152 hours).

Metabolism

Berotralstat is metabolized by CYP2D6 and by CYP3A4 with low turnover *in vitro*. After a single oral radiolabeled berotralstat 300 mg dose, berotralstat represented 34% of the total plasma radioactivity, with 8 metabolites, each accounting for between 1.8 and 7.8% of the total radioactivity.

Excretion

After a single oral radiolabeled berotralstat 300 mg dose, approximately 9% was excreted in urine (3.4% unchanged; range: 1.8 to 4.7%) and 79% was excreted in feces.

Specific Populations

Body weight, age, gender, and race did not have a clinically meaningful influence on the systemic exposure of berotralstat.

Geriatric Patients

Based on the population pharmacokinetic analyses that included elderly patients (≥ 65 to 74 years, $N=25$), age does not have a clinically meaningful impact on the systemic exposure of berotralstat [see *Use in Specific Populations (8.5)*].

Pediatric Patients

Based on population pharmacokinetic analyses that included pediatric patients 12 to <18 years of age, exposure at steady state following oral administration of berotralstat 150 mg once daily was approximately 20% higher compared to adults. The higher exposure in adolescents is not considered to be clinically meaningful.

Patients with Renal Impairment

The pharmacokinetics of a single 200 mg oral dose of berotralstat were studied in subjects with severe renal impairment (CL_{CR} less than 30 mL/min). When compared to a concurrent cohort with normal renal function (CL_{CR} greater than 90 mL/min), no clinically relevant differences were observed; C_{max} was increased by 47%, while AUC_{0-last} was increased by 14% [see *Use in Specific Populations (8.6)*].

The pharmacokinetics of berotralstat has not been studied in patients with End-Stage Renal Disease (CL_{CR} less than 15 mL/min or eGFR less than 15 mL/min/1.73 m² or patients requiring hemodialysis).

Patients with Hepatic Impairment

The pharmacokinetics of a single 150 mg oral dose of berotralstat were studied in subjects with mild, moderate, and severe hepatic function (Child-Pugh Class A, B, and C, respectively). The pharmacokinetics of berotralstat were unchanged in subjects with mild hepatic impairment compared to subjects with normal hepatic function. In subjects with moderate hepatic impairment, C_{max} was increased by 77%, while AUC_{0-inf} was increased by 78%. In subjects with severe hepatic impairment, C_{max} was increased by 27%, while AUC_{0-last} was decreased by 5%. The median half-life of berotralstat was increased by 37% and 22% in patients with moderate and severe hepatic impairment, respectively, in comparison to healthy subjects. The percent of unbound berotralstat increased 2-fold from a mean of 1.2% in healthy subjects to a mean of 2.4% in subjects with severe hepatic impairment [see *Use in Specific Populations (8.7)*].

Drug Interaction Studies

Effect of Other Drugs on the Pharmacokinetics of ORLADEYO

Berotralstat is a P-gp and BCRP substrate. Cyclosporine, a P-gp and BCRP inhibitor, decreased berotralstat 150 mg C_{max} by 7%, while AUC_{0-last} and AUC_{0-inf} increased by 27% and 24%, respectively.

Effect of ORLADEYO on the Pharmacokinetics of Other Drugs

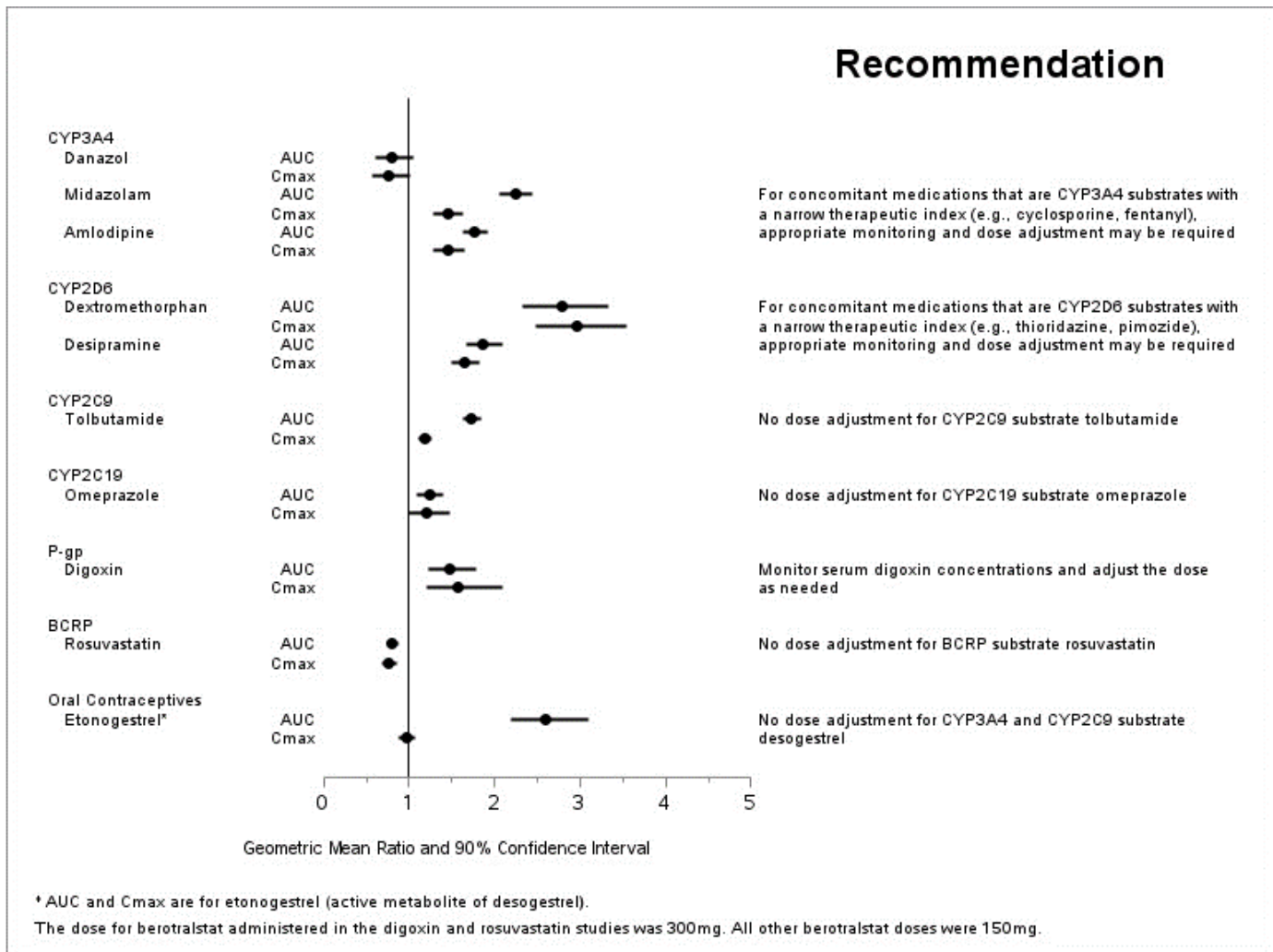
Berotralstat 150 mg once daily is a moderate inhibitor of CYP2D6 and CYP3A4, and a weak inhibitor of CYP2C9 and CYP2C19.

Berotralstat at a 300 mg dose is an inhibitor of P-gp and is not an inhibitor of BCRP (rosuvastatin exposure was decreased by approximately 20%).

Co-administration of berotralstat 150 mg once daily with 0.15 mg/0.03 mg desogestrel/ethinyl estradiol led to a 2.6-fold increase in the AUC_{0-last} of etonogestrel, the active metabolite of desogestrel.

The effect of berotralstat on the pharmacokinetics of other drugs are presented in Figure 1 [see Drug Interactions (7.2)].

Figure 1: Effect of ORLADEYO on Concomitant Medications



13 NONCLINICAL TOXICOLOGY

13.1 Carcinogenesis, Mutagenesis, Impairment of Fertility

Carcinogenesis

Carcinogenicity of berotralstat was evaluated in a 2-year study in Wistar rats and a 26-week study in Tg.rasH2 transgenic mice. The berotralstat doses (oral gavage) were up to 20 and 50 mg/kg/day in rats and mice (approximately 5 and 10 times the MRHDD on a plasma AUC basis, respectively). No evidence of tumorigenicity was observed in either species.

Mutagenesis

Berotralstat tested negative in the *in vitro* bacterial reverse mutation assay (Ames test), the *in vitro* chromosomal aberration assay in human peripheral blood lymphocytes, and the *in vivo* rat micronucleus assay.

Impairment of Fertility

In a fertility study in rats, berotralstat at oral doses up to 45 mg/kg/day (approximately 2 times the MRHDD on a mg/m² basis) showed no effect on fertility in males or females.

14 CLINICAL STUDIES

Trial 1 (NCT3485911)

The efficacy of ORLADEYO for the prevention of angioedema attacks in patients 12 years of age and older with Type I or II HAE was demonstrated in Part 1 of a multicenter, randomized, double-blind, placebo-controlled, parallel-group study (Trial 1).

The study included 120 adult and adolescent patients who experienced at least two investigator-confirmed attacks within the first 8 weeks of the run-in period and took at least one dose of study treatment. Patients were randomized into 1 of 3 parallel treatment arms, stratified by baseline attack rate, in a 1:1:1 ratio (berotralstat 110 mg, berotralstat 150 mg, or placebo by oral administration once daily, with food) for the 24-week treatment period (Part 1).

Patients discontinued other prophylactic HAE medications prior to entering the study; however, all patients were allowed to use rescue medications for treatment of breakthrough HAE attacks.

A history of laryngeal angioedema attacks was reported in 74% of patients and 75% reported prior use of long-term prophylaxis. The median attack rate during the prospective run-in period (baseline attack rate) was 2.9/month. Seventy percent of patients enrolled had a baseline attack rate of ≥ 2 attacks/month.

ORLADEYO 150 mg and 110 mg produced statistically significant reductions in the rate of HAE attacks compared to placebo for the primary endpoint in the Intent-to-Treat (ITT) population as shown in Table 2. The percent reductions in HAE attack rate were greater with ORLADEYO 150 mg and 110 mg relative to placebo, regardless of attack rate during the run-in period.

Table 2. Primary Efficacy Endpoint (Trial 1): Reduction in HAE Attack Rate- ITT Population

Outcome	ORLADEYO		Placebo
	110 mg QD	150 mg QD	
	N = 41	N = 40	N = 40*
HAE Attack Rate, rate per 28 days†	1.65	1.31	2.35
% Rate Reduction‡ (95% CI)	30.0% (4.6, 48.7)	44.2% (23.0, 59.5)	-
p-value	0.024	<0.001	-

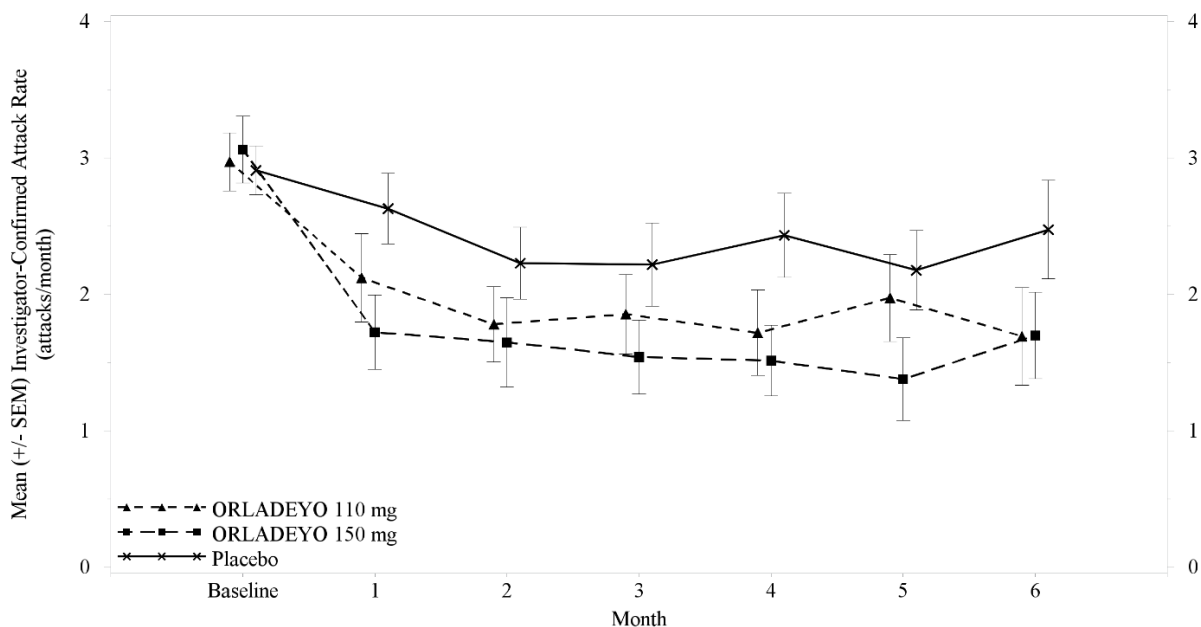
* One patient in the ITT analysis was randomized to placebo but was not treated.

† Statistical analysis based on a negative binomial regression model; number of attacks included as dependent variable, treatment included as fixed effect, baseline attack rate included as covariate, and logarithm of duration on treatment included as offset variable.

‡ Percent reduction relative to placebo.

Reductions in attack rates were observed in the first month of treatment with ORLADEYO 150 mg and 110 mg and were sustained through 24 weeks as shown in Figure 2.

Figure 2. Mean (+/- SEM) HAE Attack Rate/month Through 24 Weeks (Trial 1)- ITT Population



Pre-defined exploratory endpoints included the proportion of responders to study drug, defined as at least a 50% relative reduction in HAE attacks during treatment compared with the baseline attack rate; 58% of patients receiving 150 mg ORLADEYO and 51% of patients receiving 110 mg ORLADEYO had a $\geq 50\%$ reduction in their HAE attack rates compared to baseline versus 25% of placebo patients. In post hoc analyses, 50% and 23% of patients receiving 150 mg ORLADEYO, and 27% and 10% of patients receiving 110 mg ORLADEYO, had a $\geq 70\%$ or $\geq 90\%$ reduction in their HAE attack rates compared to baseline versus 15% and 8% of placebo patients, respectively. The rate of attacks rated as moderate or severe was reduced by 40% and 10% in patients receiving 150 mg ORLADEYO and 110 mg ORLADEYO, respectively, versus placebo.

16 HOW SUPPLIED/STORAGE AND HANDLING

ORLADEYO (berotralstat) capsules:

- 150 mg: a white opaque body with a black imprint “150” and a light blue opaque cap with a black imprint “BCX”.
- 110 mg: light blue opaque capsules with a white imprint “110” on body and a white imprint “BCX” on cap.
- A 28-day supply of ORLADEYO is provided in a carton containing four child-resistant shellpaks, each containing a 7-capsule blister card. NDC 72769-101-01 (150 mg) and NDC 72769-102-01 (110 mg).
- Each carton contains a tamper-evident seal.
- Do not use if tamper-evident seal is broken or missing.

Store at 20°C to 25°C (68°F to 77°F). Excursions permitted between 15°C and 30°C (59°F to 86°F) [see USP Controlled Room Temperature].

17 PATIENT COUNSELING INFORMATION

Advise the patient to read the FDA-approved patient labeling (Patient Information).

Inform patients of the risks and benefits of ORLADEYO before prescribing or administering to the patient.

Drug Interactions

Advise patients that ORLADEYO may interact with other drugs [see *Drug Interactions (7) and Clinical Pharmacology (12.3)*]. Advise patients to report to their healthcare provider the use of any other prescription or nonprescription medication or herbal products.

Not for Acute Treatment of HAE Attacks

Advise patients to take their usual rescue medication to treat an acute attack of HAE. Inform patients that the safety and effectiveness of ORLADEYO has not been established as an acute treatment for HAE attacks. Advise patients that they should not take daily doses higher than 150 mg once daily or additional doses of ORLADEYO to treat an acute attack of HAE due to risk of QT prolongation [see *Limitations of Use (1) and Warnings and Precautions (5.1)*].

For more information, visit www.ORLADEYO.com

ORLADEYO® is a registered trademark of BioCryst Pharmaceuticals, Inc.

Manufactured for:

BioCryst Pharmaceuticals, Inc.

Durham, NC 27703

214094-BC-002

PATIENT INFORMATION
ORLADEYO® (or-luh-DAY-oh)
(berotralstat)
capsules, for oral use

What is ORLADEYO?

- ORLADEYO is a prescription medicine used to prevent attacks of Hereditary Angioedema (HAE) in adults and children 12 years of age and older.
- ORLADEYO is not used to treat an acute HAE attack.
- Do not take more than one capsule of ORLADEYO a day because extra doses can cause heart rhythm problems.
- It is not known if ORLADEYO is safe and effective to treat an acute HAE attack.
- It is not known if ORLADEYO is safe and effective in children under 12 years of age.

Before you take ORLADEYO, tell your healthcare provider about all of your medical conditions, including if you:

- have liver problems or are on kidney dialysis.
- are pregnant or planning to become pregnant. It is not known if ORLADEYO can harm your unborn baby.
- are breastfeeding or plan to breastfeed. It is not known if ORLADEYO passes into your breastmilk. Talk to your healthcare provider about the best way to feed your baby while taking ORLADEYO.

Tell your healthcare provider about all of the medicines you take, including other medicines for HAE, prescription and over-the-counter medicines, vitamins, and herbal supplements.

Taking ORLADEYO with certain other medicines may affect the way other medicines work and other medicines may affect how ORLADEYO works.

Know the medicines you take. Keep a list of them to show your healthcare provider and pharmacist when you get a new medicine.

How should I take ORLADEYO?

- Take ORLADEYO exactly as your healthcare provider tells you to take it.
- Take 1 capsule, by mouth, 1 time every day with food.

What are the possible side effects of ORLADEYO?

Taking more than one capsule of ORLADEYO a day may cause serious side effects, including:

- **heart rhythm problems.** A heart rhythm problem called QT prolongation can happen in people who take more than one capsule of ORLADEYO a day. This condition can cause an abnormal heart beat. Do not take more than one capsule of ORLADEYO a day.

The most common side effects of ORLADEYO include:

- abdominal pain
- vomiting
- diarrhea
- back pain
- heartburn

Less common side effects include increases in liver function tests. Rarely, some patients had a brief, itchy rash.

These are not all of the possible side effects of ORLADEYO. For more information, ask your healthcare provider or pharmacist.

Call your doctor for medical advice about side effects. You may report side effects to FDA at 1-800-FDA-1088.

How should I store ORLADEYO?

- Store ORLADEYO at room temperature between 68°F to 77°F (20°C to 25°C).
- Each carton contains a tamper evident seal. Do not use ORLADEYO if the tamper evident seal is broken or missing.

Keep ORLADEYO and all medicines out of the reach of children.

General information about the safe and effective use of ORLADEYO.

Medicines are sometimes prescribed for purposes other than those listed in a Patient Information leaflet. Do not use ORLADEYO for a condition for which it was not prescribed. Do not give ORLADEYO to other people, even if they have the same symptoms that you have. It may harm them. You can ask your pharmacist or healthcare provider for information about ORLADEYO that is written for health professionals.

What are the ingredients in ORLADEYO?

Active ingredient: berotralstat dihydrochloride

Inactive ingredients: colloidal silicon dioxide, crospovidone, magnesium stearate, and pregelatinized starch

Manufactured for: BioCryst Pharmaceuticals, Inc., Durham, NC 27703

ORLADEYO® is a registered trademark of BioCryst Pharmaceuticals, Inc.

© 2022 BioCryst. All rights reserved.

For more information, visit www.ORLADEYO.com or call 1-833-633-2279.